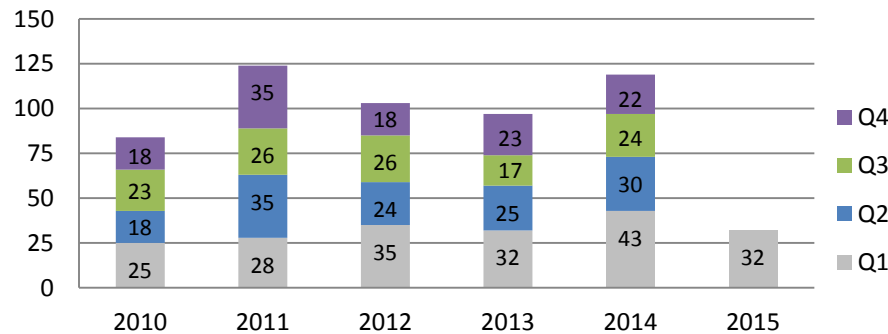


Statistics on the career opportunities posted at CFA Montréal in Q1 2015

- Number of posting in Q1 within range of previous years. On a year over year basis, fewer opportunities were posted.
- More than one third of the career opportunities came from Caisse de dépôt et placement du Québec.
- Job categories with the most career opportunities during Q1 were: Investment Analyst/Economist/Strategist (47%) and Executive/Manager (25%).

Number of career opportunities per quarter - CFA Montréal



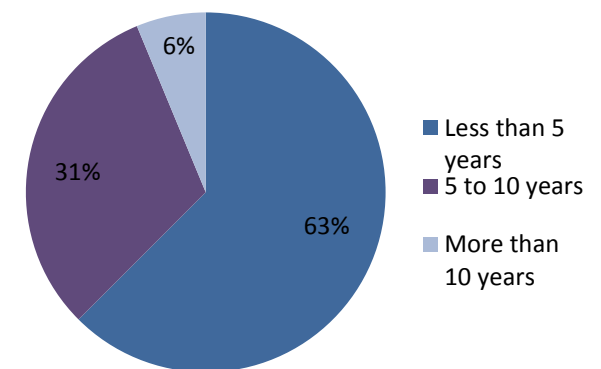
Employers that posted career opportunities in Q1 2015

Employer - Parent company	Total	Employer - Parent company	Total
Caisse de dépôt et placement du Québec	12	Triasima	1
Banque Nationale du Canada	4	Birch Hill Equity Partners	1
Industrielle Alliance	2	Bell Canada	1
Banque Royale du Canada	2	Mouvement Desjardins	1
Banque de Montréal	2	CN	1
Investissement PSP	1	Gestion Pembroke Ltée	1
GMP Securities	1	Casgrain & Compagnie Limitée	1
BlackRock Asset Management Canada	1		

Breakdown of postings from Caisse de dépôt et placement du Québec - Q1 2015

Sectors	Investment Analyst / Economist / Strategist	Analyst / Advisor	Executive / Manager	Total	%
Asset allocation	0	0	1	1	8.3%
Real Estate	4	0	0	4	33.3%
Performance	0	0	1	1	8.3%
Private Equity / infrastructure	1	0	0	1	8.3%
Fixed income	2	0	0	2	16.7%
Middle office	0	0	1	1	8.3%
Cash management	0	1	1	2	16.7%
Total	7	1	4	12	100.0%
%	58.3%	8.3%	33.3%	100.0%	

Required work experience for the career opportunities posted in Q1 2015



## Career Development Committee

Breakdown of the career opportunities (sectors/jobs) - Q1 2015								
Sectors	Investment Analyst / Economist / Strategist	Analyst / Advisor	Portfolio manager	Executive / Manager	Sale representative	Others (CEO, Financial Advisor, Consultant, Trader, Teacher or VP)	Total	%
Equities	4	0	0	0	0	0	4	12.50%
Administration	0	0	0	1	0	0	1	3.13%
Asset allocation	0	0	0	1	0	0	1	3.13%
Financing and Investment banking	0	1	0	1	0	0	2	6.25%
Risk management	0	0	0	1	0	0	1	3.13%
Private Wealth	1	0	2	0	0	1	4	12.50%
Real Estate	4	0	0	0	0	0	4	12.50%
Marketing	0	2	0	0	0	0	2	6.25%
Performance	0	0	0	1	0	0	1	3.13%
Private Equity/ infrastructure	2	0	0	1	0	0	3	9.38%
Investments	1	0	0	0	0	0	1	3.13%
Fixed income	3	0	0	0	1	0	4	12.50%
Middle office	0	0	0	1	0	0	1	3.13%
Cash management	0	2	0	1	0	0	3	9.38%
Total	15	5	2	8	1	1	32	100.00%
%	46.88%	15.63%	6.25%	25.00%	3.13%	3.13%	100.00%	